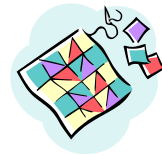


The Frayed Edge

President: Carol Hooper (370-5605)
President Elect: Barb Snider (206-920-2621)
Secretary: Nancy Best (378-5929)
Treasurer: Kelly Hilsinger (360-391-0590)

RAINSHADOW QUILTING ARTS GUILD
P.O. Box 45
Friday Harbor, WA 98250
August 2014



Mission Statement

The purpose of the Rainshadow Quilting Arts Guild is to foster an appreciation and understanding of quilts as a traditional needle-craft medium or expressive art form; share talents and knowledge to promote excellence in needlecraft; educate and encourage our members and the public in traditional quilts and quilt art through workshops, guest teachers and speakers and quilt shows. The Guild shall provide opportunities to exhibit examples of traditional quilts and quilt art; donate to charitable organizations; and provide information to all members with regard to Guild programs, retreats, shows, and meetings.

Website

Remember to check out our website
rqag.org
User name: RQAG
Password: Quilter
Web Manager: Sharalyn Lehman

The website has lots of pictures, event information, membership roster and so much more. Please check it out!

Amazon's Generous Offer to Nonprofits

The guild has set up an exciting new fund raising opportunity through Amazon. You simply connect to Smile.Amazon.com using this link to place a qualifying order and Amazon will donate 0.5% of the sale profits back to the guild!

It is easy, easy, easy to set up if you have an existing account with Amazon. Also, tell your family and friends so they can support our organization too.

<http://smile.amazon.com/ch/42-1535247>

Start shopping,



Hey, out there. Can you hear me now?

We are getting to crunch time. Still need a President-elect and a Communications chair.

President-elect – This person has a pretty easy job the first year. She helps maintain the roster, fills in if needed for the president, and learns about the role of president which she becomes the second year.

Communications - This job includes both newsletter and website maintenance. The two jobs can be split and shared by two individuals. I have done both so can tell you what to expect. Anyone with basic computer and writing skills can do the newsletter. You simply type it on

Idea

I am interested in learning the blocks Barb will be teaching at the October class (following our annual meeting) but not interested in making an entire quilt. Is anyone interested in coordinating our block colors to create a group quilt? I am thinking red & white blocks to produce a Patriotic Quilt. Contact me if you are interested. Sue

Challenges

See details on the "Needles & Pins" page.

Quilt Camp 2014

Reserve your spot for Quilt Camp, 2014, at Camp Brotherhood (November 8-11). A refundable deposit of \$5 to \$50 will hold your spot.

Mail check to PO Box 45, Friday Harbor, WA 98250.

Option #1 (3 nights, 8 meals) \$225 for a triple room

Option #2 (2 nights, 5 meals) \$150 for a triple room

Option #3 (day pass) \$20 plus the cost of meals



Continue reading for information on Kitty's and Barb's classes.

Shimmer Quilt Class

With Kitty Sorgen

September 27, 2014 and February 21, 2015

There will be two dates offered, although she is limiting each class to 12 students. We are delighted that Kitty will share this beautiful pattern with us. She does require that you spend about an hour with her prior to the class to choose combinations and prepare a layout of the design on paper. She will be available to work with individual students for the fall class after the fair and after January 1st for the February class.



Disappearing Pinwheel and Disappearing Hourglass Class

By Barbara Snider

October 4, 2014

1-4PM

Barbara Snider will be teaching a class for us in the afternoon of the annual meeting on October 4th. It will be a fun and rewarding class for all. This is one of those sneaky patterns that is so simple once you know it!!!

Each person should bring sets of 10" squares of contrasting fabrics. For each block you will need one light square and one dark square. (Generally, a light and dark, but can be difference in color, but you definitely need high contrast for this to work.) You will want to try at least two of the four possible blocks, so plan to bring more than one pair of fabrics. Here is a photo of Barb with her nearly finished quilt of the Shoo Fly block with a pinwheel in the center. Some of the other layout options are shown on the right.



You will be needing a sewing machine and regular supplies for this class.

NEEDLES AND PINS

Cannot Find the Wednesday Quilters?

Sometimes the Wednesday afternoon group, Wild Rose Quilters, is displaced when another event receives priority at the Mullis Center. The blood drives are a common example. The Wild Rose group is usually able to relocate to either the Mullis Center Library or the "craft room". So – if you arrive to find the Center occupied by others, be sure to go around to the side door and look for your quilting friends.

Sunshine

Do you know of a member in need of a card? Marilee Kirschner is our Sunshine gal. Just let her know and she will pick out an appropriate card and attach a nice note. Please do not assume that "everyone knows" because we do not want to overlook someone in need.

Tell Me What You Know

If you wish to place information in the newsletter, just let me know. Contact Sue Beauchamp at s2beau@centurytel.net or 370-5709. I love to include stories about quilt shows or shops you have visited, or just anything related to quilting. You can write an article or give me the facts and I will put something together. The newsletter is sent out the day of the monthly board meeting which is usually held the third Wednesday of each month.

Challenge Project 2014

The challenge project for quilt camp 2014 is to create a table topper. This might be a table runner, a placemat, a candle mat, a napkin, a fabric sculpture or whatever you would like to see on your table.

Healing Quilts

These should be "lap size", large enough to cuddle under but not bed size. Healing quilts are given in special circumstances to individuals in our community who have suffered a major traumatic, life-changing event. We need quilts for both genders!

Pike Place Day Care Service Quilts

These will be given to 4 year olds so should be **approximately 42" x 54"**. Measurements are not absolute but let's be sure they are useable.

Members of 501c3 groups (like RQAG) get a 10% discount at Mr. Sew Dandy in Anacortes.

Resource Center Service Quilts

Baby quilts **approximately 36" square** can be turned in and will be donated for distribution to new San Juan island infants.

Peace Island Hospital Cancer Quilts.

These quilts should measure about **48"x60" or smaller**. Each chemo patient will receive one to use during treatments and will take the quilt home once treatment is finished.

Batting Available

The guild has batting available for members to use on service quilts. Ask one of the board members if you need help locating this resource.

Help Improve the Guilds' Budget

Connect to Smile.Amazon.com to place a qualifying order and Amazon will donate 0.5% of the sale profits back to the guild!